



# Bulldog Club of Greater San Diego

BCGSD is a 501c3 Non-Profit Corporation

**Member BCA Division III**

**www.sdbulldogs.org**

**October 2007**

**Officers**

**President:**

**Derek Rasmussen**  
(619) 258-1774  
derekrasmussen@cox.net

**Vice President:**

**Janice Hochstetler**  
(760) 751-1488  
MJH6@aol.com

**Secretary:**

**Elas White**  
(619) 449-9131  
tommyhightide@msn.com

**Treasurer:**

**Corina Cauldren**  
(619) 933-4755  
ccauldren@hotmail.com

**Board Members:**

**Gerri Dimeglio**  
(619) 749-5358  
gerid@muttropolis.com

**Sarah Grant**  
(858) 922-5008  
sarahannegrant@yahoo.com

**Thomas White**  
(619) 449-9131  
tommyhightide@msn.com

**Naomi Bell Hawker**  
(619) 562-1412  
naomibell@hotmail.com

**Kasey Kimball**  
(619) 255-9094  
jkkimball@cox.net

**Tracey LeVeque Rescue**  
(619) 501-0219  
mtmleveque@aol.com

**Naomi Bell Hawker Editor**  
(619) 562-1412  
naomibell@hotmail.com

**Deb Shoemaker Publisher**

## President's Message

Dear Fellow Bulldoggers,

The dog days of summer are almost ended and fall will soon be upon us. We are almost three fourths of the way through the year and much has been accomplished. Naomi Bell and members of her show committee have been busy getting ready for our Bulldog specialty shows in May of 2008 and are making good progress. We have to start early to insure a successful event that will highlight our Club and wonderful bullies from our Club, from all over the region, and from other parts of the country. As always, club member support is essential for a successful show and your support is appreciated. We still need lots of help particularly in identifying financial sponsorship for the shows and financial sponsorships for the various awards that will be given out. You have already received some information through e-mails and more will be coming.

The August picnic was well attended and a special thanks to Geri Dimeglio and Sarah Grant for their efforts in organizing a great event. It was great to get to know some of the newer members of the club and I very much appreciate their willingness to get involved in other club activities. These activities are good opportunities to get to know one another and for our bullie buddies to socialize. San Diego Bulldog Rescue was able to raise some much needed funds through their auction and bake sale and express their appreciation for your wonderful generosity.

The cooler fall temperatures will allow us more time to spend outside with our dogs and provide them with more exercise. This is a good time to think about enrolling in some training classes with your bullies. Places like PETCO and PETSMART will have information on various types of training classes. If you are interested in training for shows please contact Tommy White, a member of the Club Board and he can set you up for that.

The annual Halloween party is coming up in October and more information will be available later in this issue of the newsletter.



### Inside This Issue

President's Message . . . . .	1
UpComping Events . . . . .	2
New Members . . . . .	2
September Minutes . . . . .	2
Speciatly Show . . . . .	4
Rescue . . . . .	6
Ask Fang . . . . .	7
Show Dog Handler . . . . .	11

## Upcoming Events

**October 20, 2007**    **October Halloween Party Woodglen Vista Park, Santee**  
**11:00am to 1:00pm 10250 Woodglen Vista Drive**

**December 28, 2007**    **December Holiday Party at Elaine's house.**

**Division III Specialty Show May 17 & 18, 2008**



## New Members

“A great big bullie hug to our new members”

**Brandon Danieli and Walter** from San Diego

Mentor: Naomi

**Amber Ferreira and Josephine** from San Diego

Mentor: Sarah

**Jana Purdy and Pudge** from La Jolla

Mentor : Geri

**Thaddeus Burcham and Rebecca Ravy and Chloe** from San Diego

Mentor: Naomi

**Patricia Blumka and P.T.** from Santee

Mentor: Tom



## TIDBITS

from the editor

A dog's normal temperature ranges between 101F and 102.5F. A body temperature of 103F (or slightly higher) is considered a fever, but is not always a sign of illness. Variations of one or two degrees from the norm can occur as a result of the dog's emotional state, activity or the environment. Always use a human rectal thermometer, never an oral one, which could break. Shake it down to 96F or below and lubricate it. Digital thermometers are preferred because they are easy to read and beep when ready. A fever over 105F may indicate heatstroke. Call your veterinarian or an emergency pet hospital for help. You must give the dog a cold-water bath or shower immediately to lower body temperature. Never place a thermometer in a dog's mouth!

The Halloween party is always fun and it's great to see the bullies in their costumes. This gives us all an opportunity to display our creative decorative abilities when it comes to showing off our dogs. In the past we have had some very creative costumes and hope the tradition continues.

If there are any of you that are interested in serving as officers or members of the club's board of directors, or on various club committees, now is the time to come forth and toss your hat into the ring and volunteer to serve. WE NEED YOU!! Please contact me and I will make sure that your names are on the slate for election or on a committee. Again thank you for your support both with finances and manpower.

It is not too early to be considering nominations for the Ann Singleton Service Award. This award is for anyone in the club who has been a member for at least a year and demonstrated outstanding service to the Club. Please submit the nominations to me either by e-mail, phone call or snail mail.

Best Regards,    Derek Rasmussen



## September Minutes

Meeting held Sept. 8,  
2007 at Jimmy's  
Restaurant in Santee

**Board Members Present:** Derek Rasmussen, Sarah Grant, Naomi Bell, Thomas White, Elsa White, Geri Dimeglio, Janice Hochstedler

**Board Members Absent:** Corina Cauldren and Kasey Kimball

**Club Members Present:** Dan Wilson

### Board Member Reports:

**Derek - We** have three new members: Thadeas Burcham & Rebecca Ravy with their bully Chloe and Patricia Blumka with her bully P.T.

**Naomi - Bulldog Rescue Committee Report -** there are seven bulldogs in rescue.

**BCGSD Logos -** motion was seconded to have our club member Dan Wilson create our new Bulldog Club Logo.

### **Specialty Show 2008 Report:**

- Finances - we have a few sponsors as of yet, but anticipate more to come.
- Other - Voted on another judge: Lillian Tiffany

**August Picnic Report:** It was a success!



### Other Discussion Items:

**October Halloween Party:**  
Date: Saturday October 20, 2007 **Location:** Woodglen Vista Park in Santee from 11am to 1pm. The address is 10250 Woodglen Vista Drive Santee, CA

**December Holiday Party:**  
Date: Friday, December 28, 2007 **Location:** Elaine's house

**Future Board Meetings -** All members are welcome to the board meetings. The next meeting has been set for November 17th 6 pm at Thomas & Elsa's house.

**Other Business -** If you have a topic that you would like discussed at the next board meeting, please e-mail Derek at least one week before the meeting so that he can add it on to the agenda.

The Bulldog Club of Greater San Diego Presents

**Fun in the SUN**

Two BCGSD Specialty Shows **PLUS**  
a Bulldog Club of America Division III Specialty Show  
**MAY 17 & 18, 2008** ★ Bernardo Winery, San Diego  
SATURDAY / SUNDAY



The next BCGSD Board Meeting will be held at 6pm pm Saturday, November 17th at Tom & Elsa's house in Santee. Anyone interested in attending, please do. RSVP to [tommyhihtide@msn.com](mailto:tommyhihtide@msn.com)



Bulldog Club of Greater San Diego Inc.  
P.O. Box 270176 San Diego, CA 92198  
Non-Profit Club EIN # 26-0568494  
619-562-1412

[www.sdbulldogs.org](http://www.sdbulldogs.org)

The Bulldog Club of Greater San Diego would like to invite you to become a sponsor for our Bulldog Club of America, Division III Specialty Dog Show on May 17 & 18, 2008 in San Diego. The event will be held at the Bernardo Winery in Rancho Bernardo.

As a sponsor, your products can be displayed or sold at our event (\$150 value). Your ad will appear in our show catalog (\$50 value) and the flyer advertising our event. A banner displaying your company name will also be hung ringside at the two-day event (\$500 value). This show should draw a large number of contestants from California, Arizona, New Mexico, Oregon, Washington, Utah & Nevada. We expect to draw 150 participants and an audience of several hundred. We also expect a televised news broadcast of the event.

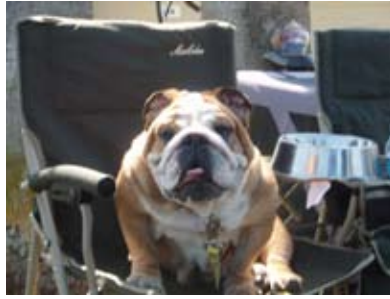
We would greatly appreciate your sponsorship of at least \$500. However, a donation in any amount would be appreciated.

I thank you in advance for your help and look forward to hearing from you for any further details.

Respectfully-  
Naomi Bell  
Specialty Show Chairperson  
[naomibell@hotmail.com](mailto:naomibell@hotmail.com)

My dogs  
Gueneve  
& C.J.





## Summer Picnic

On Saturday, August 18<sup>th</sup> we had our annual Summer Picnic at Dusty Rhodes Park

in Ocean Beach. Geri Dimeglio coordinated the event along with help from Sarah Grant.

Club members helped by bringing food and the grill master was Jaime Kimball. There were burgers & hot dogs along with sides and sodas. Although the weather was a scorcher that day in many parts of the county, it was a nice 85 degrees in Ocean Beach. Geri set



up a Rally course and wowed us with a demonstration with her trained dogs. She even took dogs who had never participated and showed us how bulldogs will do anything for food! San Diego Bulldog Rescue was there with their traditional auctions and bake sale.



Members were given info. regarding the upcoming Specialty Show in May and asked to help by getting sponsors or donations for the show. Overall,

it was a delightful event! The next picnic will be in October, so start thinking about those bulldog costumes!





Coordinator

619-501-0219

Tracey LeVeque

[mtmleveque@aol.com](mailto:mtmleveque@aol.com)

San Diego Bulldog Rescue continues to have a busy summer. We currently have the following bulldogs in the rescue program:

**Marcus:** 8 year old male, owner surrender. Needs a great home where he can sleep on the couch and be the king of the castle!

**Eggbert:** 4 year old male from Chula Vista shelter. This little 34 pounder is quite a character and deserves a great home.

**Roscoe:** 7 year old male from Chula Vista shelter. Going on home trial with a nice retired military man.

**Bo:** 9 month old male, owner surrender. Currently on home trial with a nice family who just recently lost their rescue bullie.

**Althea:** 10 year old female, owner surrender. Had severe ear infections, and after surgery is doing much better!

**Isabella:** 5 year old female, owner surrender. Might need surgery for bladder stones, more details to come.

**Mercy:** 1.5 year old male, owner surrender. In medical rehab for Demodex, doing very well. Very sweet boy who will be ready for great home soon!

Coming in: male from South Shelter, severe fly strike on ears, skin problems

**SDBR would like to thank everyone for their support at the Summer Picnic! Your generous contributions are greatly appreciated and allow us to continue helping these dogs.**



**A column to address common training problems for pet owners.  
You are welcome to send in your questions or problems to  
Betty Fisher by phone (559-689-3551, [bfisher@sti.net](mailto:bfisher@sti.net) or  
P.O. Box 93, Raymond, CA 93653**



Fang would like to hear from you about problems you may be having with your Bulldog. You can reach him at the above addresses.

Dear Fang,

We had so much fun at the BCGSD picnic with the Rally demo Geri put on. I think it would be fun for Max but he is a rescue and is not AKC registered. Can he do Rally?

Wondering

Dear Wondering,

Yes, Max can compete in Rally if you contacts the American Kennel Club and ask for an Indefinite Listing Privilege (ILP) application. You can find the form on their web site [www.akc.org](http://www.akc.org) by clicking on registration and then on downloadable forms. You can also use search. You can also find the rules and regulations for Rally on the web site. Be sure to look for the Rally sign book. This book tells you how to perform the various Rally signs.

Max must be neutered but he will then be eligible to compete in obedience, rally, agility and any other performance event Bulldogs are eligible for.

Rally is a lot of fun and a lot of Bulldogs have been earning titles in the two years since Rally has been titling. There are even some new rally games beginning in 2008. I'm very proud that my many time great grand daughter, Prize, was the very first Rally titled Bulldog. If people ask my mom would be glad to discuss various rally signs in this column during the rest of the year before our Rally trials in May 2008.

All of my Mom's Newfoundlands have been ILP dogs

Fang

*Betty Fisher*

*Betty Fisher has owned and trained Bulldogs to more than twenty obedience, carting and agility titles. She is the author of "So Your Dog's Not Lassie" an award winning book on training independent dogs and "Caninestein", both recommended by the Bulldog Club of America. Betty writes a regular performance column for the Bulldogger, magazine of the Bulldog Club of America.*



In Loving Memory  
Drake

Pets love us unconditionally,  
soften our lives with sweetness and affection.  
Such treasures can not be forgotten.

Our condolence go out to  
Gordon Schreiber

# Meet The Members

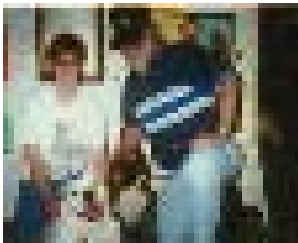
Deb Shoemaker



Hi there, this is Deb's camera speaking. Thought I'd tell you about some interesting things I've seen from this side of the lens. I've been watching bulldogs in all poses and situations for about 22yrs. I



really look forward to the Halloween Picnic every year and the fun costumes. Here's Dusty & Max from a few years back. Oh, and the same two at the Del Mar Fair booth. I take a lot of photos that help decorate the Fair booth and many of these make it to the club newsletter, where Deb is publisher. She can make any bulldog look like a movie star!



If I like it, it's mine.  
If it's in my mouth, it's mine.  
If I can take it from you, it's mine.  
If I had it a little while ago, it' mine.  
If it's mine, it must never appear to be yours in any way.  
If I'm chewing something up, all the pieces are mine.  
If it just looks like mine, it's mine.  
If I saw it first, its mine..  
If you are playing with something and you put it down, it automatically becomes mine.  
If it's broken it's yours

## Drum Roll Please...

The BCGSD Board is proud to announce that our logo has been updated. Although the wrinkled, slouching Bulldog has served us well for many years, it is time to bring in a logo that promotes the breed standard and says "Wake up and smell the kibble!"

We would like to thank club member, **Dann Wilson**, for creating this remarkable logo. Dan designs logos for a living and has graciously donated his time and design to our club. For a look at more of his work, check out [www.applejuicedesign.com](http://www.applejuicedesign.com). Look for club T-Shirts and other merchandise with the new club logo coming soon.



Would you like to be a sponsor of our Specialty Show?

### Sponsorship Levels

Silver Bone Level = \$100 to 249

Gold Bone Level = \$250 to \$499

Platinum Bone Level = \$500 to 999

Diamond Bone Level = \$1000 +

----- Please Print clearly-----

Name \_\_\_\_\_

Address \_\_\_\_\_

City/State/Zip \_\_\_\_\_

Phone \_\_\_\_\_ E-Mail \_\_\_\_\_

Amount of Donation \_\_\_\_\_

Name of donor as you want it printed in the catalog  
\_\_\_\_\_

Payment Enclosed \$ \_\_\_\_\_ Please make checks payable to BCGSD

Please send to Naomi Bell 10397 Chaparral Drive Santee, CA 92071

Dear Editor,



Larry and I would like to highlight Thomas White's class and his impact on us. Thomas's class covers a lot more than "how to show your dogs"; it's a social event for the dogs and us. It covers grooming, upcoming club events, potential health and political issues.

Larry in his first dog show was entered in the 6 to 9 month class with our first puppy Rocky. Larry said he was a little nervous on Saturday, it didn't help that we left home at 5:15 am only to wait 45 minutes for an accident to clear on one of our mountain roads. Thomas went over Larry's performance on Saturday and pointed out what he did right and wrong. Due to all of Thomas's help Larry felt very comfortable in the ring on Sunday and it showed with our first blue ribbon.

We thought the club members really shined at the show with great sportsmanship. They were very supportive of each other, promoted the breed well and made the show fun.

Thomas is not only our teacher; he has become our mentor and friend. We encourage anyone who is even thinking about showing to attend his Saturday morning classes. The socialization of the dogs alone is more than worth the time.

Our puppy has learned so many things from Thomas and the other folks that attend the classes. We cannot say enough kind words for him and his wonderful family.

Sincerely,  
Larry and Diane Miller

[naomibell@hotmail.com](mailto:naomibell@hotmail.com)



Does your dog pull on the leash?  
Do you need to socialize your dog?  
Does your dog jump up on your guests?  
Would you like to learn how to show your dog?



Check out the **FREE** classes  
for members.

**Obedience / Conformation / Socialization Classes**

Saturdays 9-10 am free to members,  
\$5./ class non-members.

Contact Tom: [tommyhihtide@msn.com](mailto:tommyhihtide@msn.com)

## **A Day In the Life of a Show Dog Handler** **by Dawne Deeley**

Most people with more than a passing interest in dogs will admit to watching the occasional dog show. It might be repeat television coverage of New York's great Westminster Kennel Club affair, or maybe the enormous Eukanuba National Championships. A few lucky individuals may have accidentally channel-surfed into a Crufts broadcast, and I swear **\*everyone\*** who knows of my doggy involvement has told me what they think of the mockumentary "Best In Show". And there is one common observation thread: the dogs are impeccably groomed and presented, the handlers cool and collected, and it all looks very tidy and...well...just a bit surreal.

My non-doggy friends think this is a fairy-tale life, and as one who spends more days on the road than off, I usually have to agree. As a breeder/owner-handler of Carelian Bear Dogs and Norwegian Buhunds, I have the reality of knowing any successes are likely going to happen in direct proportion to the work I put in – but that's just the tip of the iceberg. To be sure, it's a great luxury driving through neighboring provinces, getting to intimately know those little way-stations that don't appear on regular maps, and just spending time with the charges in my care, but there's a lot more to it than just throwing on a leash, collar and number and praying the judge will point in my direction. Here's how this dog handler takes to the streets, and lives to tell about it....

THE DAY BEFORE: It's time to pack up the dogs and head out for another weekend in my R.V. 'home away from home.' This is where I spend most of my days during the summer, and a goodly number in the fall and spring. Sure, it's set up like a giant kennel, but after all, it **\*IS\*** about the dogs and their comfort level. A great show dog is an athlete who must give an 'up' performance on demand, day in and month out. The best ones can be compared to human entertainers. They love their job and they know they're good at it, but it's still a physical grind, and a tough one at that.

With that in mind, I prepare and go over the checklist of essentials for the dogs; bags of their regular kibble and single-serving freezer packs of meat and vegetables. In case of 'iffy' stomachs caused by too much show 'bait' or general excitement, a few cans of medical 'gastro' diet, one or two of plain unsalted chicken broth, a bag of white rice (bland and easy on the tummy) and some Pepto Bismol tablets **\*and\*** liquid. A good general topical antibiotic for scratches and nicks, plus some bandages, peroxide, an oral antihistamine, and if your vet approves, an oral antibiotic as well. After all, you never intend to find trouble, but often as not it **\*will\*** find you. A case or two of bottled water, as well two or three 10-gallon portable jugs. A few frozen bones and bags of freeze-dried tripe for treats. The metal buckets which travel in their crates are filled with water and put in the freezer; this will not only help keep the crates cool, but won't slosh as the vehicle moves. Don't forget the beef heart and liver, which has been cooked and frozen for in-the-ring enticement, and the chamois-like 'chill' blankets in case the mercury rises. Stacks of clean towels, crate pads and toys, plus spare leashes and collars in the event one snaps or is misplaced. Oh, and 'poop' bags – recycled from grocery detail and re-used for picking up Nature's little indiscretions!

Forget anything? Of course! Combs and brushes, grooming scissors and nail trimmers and blow dryers...and while I'm at it, check and re-fill the spray bottles that contain plain water (for misting warm dogs), the 'dry' shampoo needed for rings-side touch-ups, and the bug repellent we may or may not need if we run into wasps and hornets. Ditto on the dryer sheets we keep for the same purpose; in a pinch, they can be poked over a comb and run through a dog's coat to keep flying pests at bay. The biggest things are last – the fans (both detachable crate varieties and a large free-standing one), sun screens, exercise pens and plastic 'grass' mats are checked for batteries that work and clips that hold.

Hours later, I arrive at an out-of-town show venue, and am directed to my pre-arranged slice of turf by a patient and polite parking attendant. Now it's a controlled rush to get the awnings down, the exercise pens set up with screens in place and covers tied on, the water buckets filled, and dogs out for a walk to both stretch cramped legs and 'scrub off' a little of the cabin fever that comes from crate traveling. Relaxed and refreshed, the dogs go into their respective personal outside pens and wait for Mom to cook dinner. This is the calm before the storm. I then have a few hours to put my own feet up, take everyone out again, tuck them all in and set the alarm; tomorrow is an early day.

**6:00 AM** – If the alarm doesn't wake you up, the roaring generator in next door's R.V. will. After years of repetition, the roll-out-of-bed-and-flick-on-the-coffee-machine is pretty much an instinctive response. Before I so much as brush my own teeth, I start with the dogs. Quiet ones go outside in their pens, and the first one put away for the night is the first one out for a walk. Each dog gets his or her twenty minutes, a handful of cookies, a bucket of water.

**7:30 AM** – The show secretary's desk is open, so I go to collect armband numbers and the catalog which will indicate where I am to go, and at what time. I have dogs indicated at 9:30, so time to clean and spruce up...the dogs first, of course! What I will wear is dictated by weather, and, to a certain degree, by the dog. Bright patterns or loose clothing is a no-no; it's distracting. On the other hand, dark colors against a black or dark brown dog will make the animal 'disappear' – and that's not good either. You learn quickly that, the tight skirt, which looked so slimming in the store, will hobble you the minute you take a running step, and if it's too short, the minute you bend over ringside 'railbirds' will let you know. And pockets – heaven forbid you wear anything without pockets! Where else are you going to stuff the smoked liver, the baked beef heart, and the squeaky mouse made of rabbit fur?

**8:00 AM** – Up on the grooming table goes the first; a quick spritz with water to 'fluff' the coat, and a check of their white feet to make sure they are properly trimmed and there is no grass staining. Many of the breeds you will see have had their 'basic' prepping done at home, but varieties - such as Poodles, Maltese, Lhasa Apsos and Shih Tzu, to name a few - will still need hours of work. And boy, do they love the primping and combing – think of it as a sort of day spa! Many of the ring veterans will actually fall asleep on their grooming tables, so relaxed are they to the attention. For me with the Nordic dogs, it's the more matter-of-fact and 'natural' the better, but much like brushing and tidying my own hair, there are still good ways and bad ways to do it.

**8:50 AM** – Grab a lead, slip the paper number under the elastic on my left arm, a water bottle under my right, stuff some baked liver slices and a comb in my pocket, and oh yes, don't forget the dog! Then its off to ringside, where my judge is fifteen minutes behind and I have other dogs waiting for their turn elsewhere. Run back to the R.V. – the dog thinks it's a game, I nearly have a heart attack – yell at my assistant to start on Dogs #2 and #3, sprint back to the ring, and make it just in time to go in. Now the game is less of trying to win (I'm the only entry) than it is of looking composed and relaxed. I get a smile from the judge, a good showing from the dog, and a Best of Breed ribbon that serves to put me into Best In Group competition later on in the afternoon.

**10:30 AM** – Coffee pot back on (Breakfast? What breakfast?) and all dogs finished their breed judging for the day, and some will go on to Group level later in the afternoon. This means I can strip off the suit, get back into my old 'dud' clothes for the moment, and start the walking process all over again. Thank goodness for assistants, otherwise I'd be wearing out a pair of running shoes every weekend. It's getting warm; ice cubes go in the water buckets, the fans get hauled out and turned on, and sun screens and shades are re-adjusted and moved to take advantage of whatever angle the shade is coming from. Two dogs go back in the motor home to enjoy air conditioning and a nap, while the others are more intrigued with watching the world go by in front of their 'house'.

**12 NOON** – Time to change into the suit again, and check the Group judging times for the dogs who are eligible. Grab a sandwich or hot dog and gulp it down while getting the first dog ready. This time a full wet-down is necessary to get out the fairground dust, and it takes me the better part of half an hour to blow all that water out of the coat and re-comb it. My dog *\*knows\** what's in store, and wiggles in anticipation of 'play time' with Mom, and all the treats and goodies that go along. Judging starts again at 1:30, so best be ready and waiting – and we are!

**1:45 PM** – Group judging is announced, giving me roughly five to ten minutes to get to ringside. Oops, don't forget to grab the 'chill blanket' out of the fridge! This is a thick, chamois-type towel that can be soaked down and left in the fridge; placed over a dog's back, wrapped around their belly or placed under their feet, it's a great way to keep them cool without subjecting them to temperature extremes. Many handlers have custom-made designs that fit their dogs to a "T". Spray bottle to keep

it wetted down, as well as to moisten the dog's mouth. Most long-time show dogs have been trained to accept water sprayed into their mouths, and many make it a game. Too much water ingested too fast, or too cold, could cause vomiting or colicky stomachs – this amount is just right.

**2:00 PM** – Off into the Group ring, after a quick look to see if my assistant is standing near enough that I can access that water bottle or towel, should my dog get too warm. Sometimes it's more a reassurance for \*me\* than a necessity for the dog, but if you don't have it you can't use it. Now I find I need more bait, and again my assistant comes through. This level of judging can take anywhere from ten to twenty minutes, only two or so of which actually involve me. This day I'm lucky enough to win a placement, but because I didn't come first, I don't advance to Best In Show. That's ok though – I can change (again), walk dogs (again) and do a bit of grooming for the picture I want taken later with my Group judge.

**3:00 PM** – Dogs go into the R.V. for some 'down time'. They follow pretty much the same routine at home, and know this is rest time. A bone, a drink, maybe a nap – they need this to recharge their batteries, and besides, when evening comes and the weather cools a bit, they'll be out for a long romp.

**5:00 PM** – Dogs back out again, but now it's dinner time and everyone is impatient and hungry...well, except for the one I showed this morning who did so well. A bit too much in the way of rich show ring treats means an upset tummy and bit of diarrhea, but as she's otherwise bright and chipper I won't worry yet. A bit of boiled rice, a few spoonfuls of a special gastrointestinal canned food, and we'll see if she improves. Anything out of the ordinary or more serious, we pack up and go home. The rest have their own recipes that I pack with me, and that's pretty par for the course. Some are picky eaters, some are gluttons, and some just eat enough to keep themselves in good condition, but I'm lucky my dogs are 'easy keepers' for the most part, and don't require a lot of tweaking.

**6:00 PM** – Human Dinner Time!

**7:30 PM** – Now that the dogs have settled, and their dinners have had a chance to digest, we begin to rotate them for walks; if there's enough room, a chance to play ball or chase a thrown stick. The show circuit 'regulars' have their friends, both human and canine, and it's great fun to see them reunited. Not every exhibitor will be at the same shows, as many dog clubs offer alternative venues and competitions, so in that regard it's a new game every weekend. My assistant and I take turns walking dogs, doing dishes, rinsing out towels and chill blankets, replenishing water buckets, and filling up the levels on all the sundry and necessary items (like the coffeepot!) that we will need tomorrow. Maybe too, a chance to check out ringside vendors that are still open, so we can buy things we don't really need, but absolutely can't live without. The smudge candles are lit, the battery lamps turned on, and there's a relative time of peace and quiet before that last late-night "pee-break".

**10:30 PM** - Dogs are settled in bed, with their personal stuffed toys and new chew bones. They're tired, and will fall asleep quickly. I still have to make phone calls, check tomorrow's judging schedule. Oh drat, here comes a real rain storm, wind and all...all around me I hear the slamming of R.V. doors as people race outside to undo screens and awnings that have been tied down, and make sure they're up and out of harm's way. That takes another half an hour, during which we're completely soaked. So are all the bits and pieces – the deck chairs, the dog toys, the nearly-dry towels. Sometime after midnight I hear the storm abate, and in my half-sleep I reach over and re-set the alarm half an hour earlier so it can all be put back up again. After all, tomorrow is another day!!!





**Bulldog Club of Greater San Diego**  
**Member BCA Division III**  
**P.O. Box 270176**  
**San Diego, CA 92198**

**Club Phone:**  
**(619) 685-8582**



**Halloween Party**  
**Woodglen Vista Park**  
**10250 WoodglenVista Drive**  
**Santee**  
**October 20, 2007**  
**11:00am to 1:00pm**

